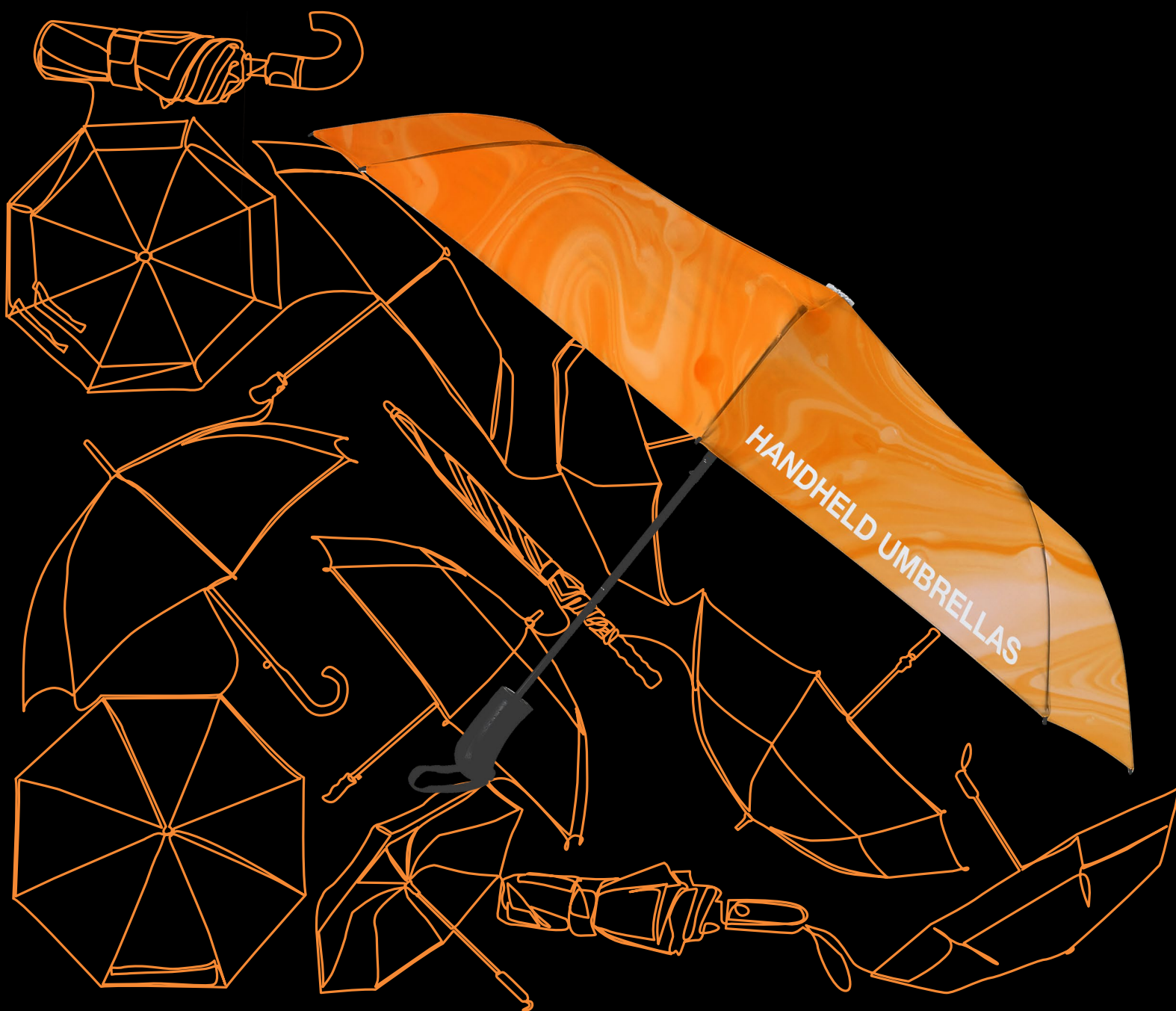


2026

# HANDHELD UMBRELLAS



# STICK HANDHELD UMBRELLA COMPARISON CHART

BEST SELLERS ★ SUSTAINABLE ◆	GOOD	ARC	CONSTRUCTION			FEATURES				DYE SUBLIMATION
			SHAFT	RIBS	HANDLE	VENTED	MANUAL / AUTOMATIC	SAFETY GLIDE	INVERTED	
	Challenger II ◆	62"	fiberglass	fiberglass double-rib	anti-slip rubber with medallion	✓	manual	✓		
	Challenger w/ Alternating Panels ◆	62"	fiberglass	fiberglass double-rib	anti-slip rubber with medallion	✓	manual	✓		
	Challenger w/ Checkerboard Panels ◆	62"	fiberglass	fiberglass double-rib	anti-slip rubber with medallion	✓	manual	✓		
	Classic Fashion ◆	48"	steel	fiberglass	curved black hardwood		manual			
	Gale Force Golf ◆	64"	fiberglass	fiberglass double-rib	anti-slip, color-matched, rubber	✓	manual	✓		
	Golf ◆	62"	black fiberglass	black fiberglass	anti-slip rubber		manual			✓ (only)
	Square Challenger ◆	68"	fiberglass	fiberglass double-rib	anti-slip rubber with medallion	✓	manual	✓		
	Storm 2 ◆	60"	fiberglass	fiberglass	blonde hardwood		manual	✓		
	BETTER		SHAFT	RIBS	HANDLE	VENTED	MANUAL / AUTOMATIC	SAFETY GLIDE	INVERTED	DYE SUBLIMATION
	Euro Fashion ◆	48"	wood	fiberglass	curved wooden		auto-open			
	Luxe ◆	48"	dark mahogany	fiberglass	curved wooden		auto-open			
	Redwood ◆	46"	steel	fiberglass	wood		auto-open			
	Sport & Street ◆	48"	black steel	black steel	hardwood		auto-open			
	BEST		SHAFT	RIBS	HANDLE	VENTED	MANUAL / AUTOMATIC	SAFETY GLIDE	INVERTED	DYE SUBLIMATION
	Auto Challenger ◆	62"	fiberglass	fiberglass double-rib	anti-slip rubber with medallion	✓	auto-open	✓		
	Hurricane ◆	60"	fiberglass	fiberglass	rubber	✓	auto-open			
	Park Avenue 4 ◆	46"	steel with ABS plastic	fiberglass	cherry wood		auto-open		✓	
	Rebel 2 ★ ◆	46"	fiberglass	fiberglass	rubber grip		auto-open		✓	✓
	SPECIALTY		SHAFT	RIBS	HANDLE	VENTED	MANUAL / AUTOMATIC	SAFETY GLIDE	INVERTED	DYE SUBLIMATION
	JingleBrella™ ◆	50"	black steel	fiberglass	matte black rubber		auto-open			
	Spotlight ◆	50"	black steel	black fiberglass	matte black ABS rubber		auto-open			

## Anatomy of a Handheld Umbrella



## Print Options



### Full-Color Imprint

- Simple to complex graphics
- Vector art required; one imprint per location
- Available in limited stock fabric colors only
- Min. and max. artwork size requirements apply

### Dye Sublimation

- Simple, complex and photographic graphics
- Vector and raster art accepted
- Art is dye sublimated on white fabric only
- Full-color artwork can be printed across the entire umbrella
- No artwork size requirements
- Cannot guarantee graphic alignment across seams

## Choose Your Imprint Locations



One imprint per location.  
Only one setup fee per handheld umbrella.

## Solid Stock Handheld Umbrella Colors

WHITE *	CANARY PMS 102	PUMPKIN PMS 165	CRIMSON *	RUBY *	PINK PMS 204
PURPLE *	CYAN PMS 2925	AZURE *	INDIGO *	LIME GREEN *	SPRUCE *
GRAY PMS 423	COOL GRAY * PMS COOL GRAY 11	BLACK *			

PMS colors are for reference only and may vary slightly from actual color. See specific products for available stock colors.  
\* indicates color is available for two-color handheld umbrellas.

**PRICES ARE SUBJECT TO CHANGE.** No setup fee on orders placed via our website.  
Visit [showdowndisplays.com](http://showdowndisplays.com) for current pricing, graphic templates, product videos and assembly instructions.

[showdowndisplays.com](http://showdowndisplays.com)

# FOLDING HANDHELD UMBRELLA COMPARISON CHART

BEST SELLERS ★ SUSTAINABLE ◆	GOOD	ARC	CONSTRUCTION			FEATURES				DYE SUBLIMATION
			SHAFT	RIBS	HANDLE	VENTED	MANUAL / AUTOMATIC	SAFETY GLIDE	INVERTED	
	Park Avenue 1 ◆	44"	hexagon steel	fiberglass	cherry wood	windproof	auto-open			
	Steal ★ ◆	44"	steel	fiberglass	anti-slip rubber		auto-open			✓
	BETTER		SHAFT	RIBS	HANDLE	VENTED	MANUAL / AUTOMATIC	SAFETY GLIDE	INVERTED	DYE SUBLIMATION
	CEO ◆	46"	aluminum	fiberglass	curved, faux wooden		auto-open/close			
	Champ II ◆	58"	steel	fiberglass	anti-slip rubber	✓	auto-open			
	E-Z Fold ◆	42"	steel	fiberglass	rubber coated plastic		auto-open/close			
	Folding Challenger III ◆	48"	steel	fiberglass	anti-slip, rubber coated plastic	✓	auto-open			
	Madison ◆	46"	aluminum	fiberglass	rubber		auto-open/close			
	Park Avenue 2 ◆	46"	steel	fiberglass	cherry wood	✓	auto-open			
	Park Avenue 3 ◆	58"	black steel	fiberglass	cherry wood	✓	auto-open			
	Sport Challenger ◆	46"	fiberglass	fiberglass	rubber	✓	auto-open			
	Super Pocket Mini ◆	43"	aluminum	aluminum	rubber		auto-open/close			
	Super Windy ◆	46"	hexagon steel	fiberglass	wood with nickle accents	✓	auto-open			
	Zion ◆	44"	black steel	black fiberglass	cherry wood		auto-open			
	BEST		SHAFT	RIBS	HANDLE	VENTED	MANUAL / AUTOMATIC	SAFETY GLIDE	INVERTED	DYE SUBLIMATION
	Duke ◆	44"	steel	fiberglass	black and gun-metal rubber	windproof	auto-open/close			
	E-Z Fold Vented ◆	46"	steel	fiberglass	rubber coated plastic	✓	auto-open/close			
	Freedom ◆	46"	steel	steel	rubber coated plastic	✓	auto-open/close			
	Judge ◆	54"	nickel-plated steel	fiberglass	hard plastic and faux wood grain	✓	auto-open/close	✓		
	Park Avenue 5 ◆	46"	chromed steel	fiberglass	cherry wood		auto-open/close		✓	
	Rebel 3 ◆	46"	fiberglass	fiberglass	rubber grip		auto-open/close		✓	
	Super Flat Mini ★ ◆	43"	aluminum	fiberglass	rubber	✓	auto-open/close			

## Media



rPET polyester is made from recycled PET plastic.



A lightweight, durable and water-repellent material.



## PFAS-Free Commitment

All handheld umbrellas are PFAS-free!

Known as forever chemicals, PFAS are harmful to both the environment and human health. By eliminating PFAS from all our handheld umbrellas, we are taking a big step towards reducing our environmental impact.

## RAINALERTZ™ APP

Handheld umbrellas are powered by our patented RainAlertz™ app.

### Get Started in 4 Easy Steps

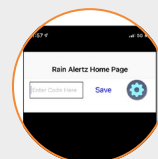


Download in your app store.

Available for all major operating systems.



**Step 1.**  
Download the **free** RainAlertz™ app on your phone.



**Step 2.**  
Enter your program code.



**Step 3.**  
RainAlertz™ provides a branded micro-site with your customer's logo.



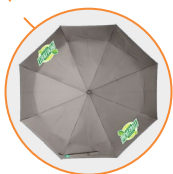
**Step 4.**  
Receive a branded push-notification when there's at least a 60% chance of rain.

**PRICES ARE SUBJECT TO CHANGE.** No setup fee on orders placed via our website.  
Visit [showdowndisplays.com](http://showdowndisplays.com) for current pricing, graphic templates, product videos and assembly instructions.

[showdowndisplays.com](http://showdowndisplays.com)



Shown in indigo  
with 4 locations



Canopy features a specially designed film that allows the umbrella to maintain it's shape.

#### Stock E-Z Fold Umbrella Colors

● Indigo PMS 295 ● Gray PMS 423

● Black

PMS colors are for reference only and may vary slightly from actual color.

## E-Z FOLD UMBRELLA

The umbrella that folds itself! A smart, sleek and innovative solution!

- 42" arc with eight-panel construction
- Auto-open/close folding umbrella
- Steel shaft and fiberglass ribs
- Rubber coated plastic handle with wrist strap
- Canopy constructed with rPET polyester
- Minimum order quantity of 12
- Custom options available (call for quote; restrictions may apply)
- Hardware has a lifetime warranty

### Full-Color Imprint

Item #	Description	12-24	25-49	50-74	75-99
A00081	E-Z Fold Umbrella (1 Location)	34.34	33.02	31.63	30.20
A00082	E-Z Fold Umbrella (2 Locations)	35.70	34.63	33.56	32.84
A00084	E-Z Fold Umbrella (4 Locations)	38.42	37.27	36.11	35.35

**Setup fee: \$20(G)**

Stock fabric colors with full-color artwork.  
Minimum order quantity of 12.

**Pricing is subject to change.**

USD MSRP (C)

Closed Product Size	Arc	Finished Graphic Size	Product Wt.	Media
1.5"W x 11"H x 1.5"D	42"	view online template	12 lbs. (qty 12)	rPET polyester

Production Lead Time: 5 days from final proof approval



Umbrella folds down to 11" for portability.



Auto-open/close button is easily accessible on a rubber coated plastic handle.



Shown with  
2 locations



Wind vent technology allows greater airflow.

## E-Z FOLD VENTED UMBRELLA

A vented umbrella that automatically folds itself provides a smart and innovative solution for all-weather protection!

- 46" arc with eight-panel construction
- Auto-open/close folding umbrella
- Steel shaft and fiberglass ribs
- Rubber coated plastic handle with wrist strap
- Canopy constructed with rPET polyester
- Minimum order quantity of 12
- Custom options available (call for quote; restrictions may apply)
- Hardware has a lifetime warranty

### Full-Color Imprint

Item #	Description	12-24	25-49	50-74	75-99
A00331	E-Z Fold Vented Umbrella (1 Location)	36.52	35.42	34.33	33.60
A00332	E-Z Fold Vented Umbrella (2 Locations)	37.88	36.74	35.61	34.85
A00334	E-Z Fold Vented Umbrella (4 Locations)	40.60	39.38	38.16	37.35

**Setup fee: \$20(G)**

Black with full-color artwork.  
Minimum order quantity of 12.

**Pricing is subject to change.**

USD MSRP (C)

Closed Product Size	Arc	Finished Graphic Size	Product Wt.	Media
1.5"W x 11"H x 1.5"D	46"	view online template	11.25 lbs. (qty 12)	rPET polyester

Production Lead Time: 5 days from final proof approval



Umbrella folds down to 11" for portability.



Canopy features a specially designed film that allows the umbrella to maintain it's shape.



Auto-open/close button is easily accessible on a rubber coated plastic handle.

**PRICES ARE SUBJECT TO CHANGE.** No setup fee on orders placed via our website.  
Visit [showdowndisplays.com](http://showdowndisplays.com) for current pricing, graphic templates, product videos and assembly instructions.

[showdowndisplays.com](http://showdowndisplays.com)





## STEAL UMBRELLA

This versatile and eco-friendly umbrella is the perfect everyday companion, offering great quality at a low price.

- 44" arc with eight-panel construction
- Auto-open folding umbrella
- Steel shaft and fiberglass ribs
- Anti-slip rubber handle with wrist strap
- Solid-color canopy is constructed of rPET polyester;
- two-color canopy is constructed of rPET polyester and nylon
- Minimum order quantity of 12 for full-color imprint;
- 25 for dye sublimation
- Custom options available (call for quote; restrictions may apply)
- Hardware has a lifetime warranty
- Dye sublimation is not eligible for Rush Service

### Full-Color Imprint

Item #	Description	12-24	25-49	50-74	75-99
A00041	Steal Umbrella (1 Location)	12.54	12.06	11.55	11.03
A00042	Steal Umbrella (2 Locations)	13.90	13.36	12.80	12.23
A00044	Steal Umbrella (4 Locations)	16.62	16.12	15.62	15.29

### Setup fee: \$20(G)

Stock fabric colors with full-color artwork.  
Minimum order quantity of 12.

### Pricing is subject to change.

USD MSRP (C)

Closed Product Size	Arc	Finished Graphic Size	Product Wt.	Media
1.5"W x 13"H x 1.5"D	44"	view online template	11 lbs. (qty 12)	solid-color: rPET polyester two-color: rPET polyester (white) / nylon (color)

### Dye Sublimation

Item #	Description	25-49	50-99	100-249	250-499
A00380	Steal Umbrella (Single-Sided)	43.60	41.92	40.16	38.35
A00381	Steal Umbrella (Double-Sided)	51.55	49.57	47.49	45.35

### Setup fee: \$20(G)

White fabric fully dye sublimated with full-color artwork.  
Minimum order quantity of 25.

### Pricing is subject to change.

USD MSRP (C)

Closed Product Size	Arc	Finished Graphic Size	Product Wt.	Media
1.5"W x 13"H x 1.5"D	44"	view online template	23 lbs. (qty 25)	rPET polyester

Production Lead Time: 5 days for full-color imprint / 30 days for dye sublimation from final proof approval



Folds down to 13"  
for portability.



Steel shaft with  
fiberglass ribs for  
lightweight durability.



Shown with dye sublimation  
(double-sided)

Single-sided dye sublimated  
umbrellas are printed on one  
side; reverse image shows  
through underneath.



Shown in white/pumpkin  
with full-color imprint  
(1 location)

Auto-open button is easily  
accessible on the anti-slip  
rubber handle with wrist strap.

### Stock Steal Umbrella Colors

White	Canary PMS 102
Pumpkin PMS 165	Crimson PMS 186
Ruby PMS 201	Pink PMS 204
Purple PMS 2685	Cyan PMS 2925
Azure PMS 286	Indigo PMS 295
Lime Green PMS 375	Spruce PMS 3435
Cool Gray 11	Black
Black/White	White/Pumpkin PMS 165
White/Crimson PMS 186	White/Ruby PMS 201
White/Purple PMS 2685	White/Azure PMS 286
White/Indigo PMS 295	White/Spruce PMS 3435

PMS colors are for reference only and may vary slightly  
from actual color.

**PRICES ARE SUBJECT TO CHANGE.** No setup fee on orders placed via our website.  
Visit [showdowndisplays.com](http://showdowndisplays.com) for current pricing, graphic templates, product videos and assembly instructions.  
[showdowndisplays.com](http://showdowndisplays.com)



Shown in  
black/white  
with 1 location

Wind vent technology allows  
greater airflow; can withstand  
winds up to 75 mph.

#### Stock Challenger Checkerboard Panels Umbrella Colors

-  Black/White
-  White/Crimson PMS 186
-  White/Azure PMS 286
-  White/Indigo PMS 295

PMS colors are for reference only and may vary slightly  
from actual color.

## CHALLENGER CHECKERBOARD PANELS UMBRELLA

This high-performance umbrella combines durability and  
innovation for protection against the elements!

- 62" arc with eight-panel construction
- Manual-open golf stick umbrella
- Fiberglass shaft and double-rib frame
- Canopy is constructed of rPET polyester and nylon
- Minimum order quantity of 12
- Custom options available (call for quote; restrictions may apply)
- Hardware has a lifetime warranty

#### Full-Color Imprint

Item #	Description	12-24	25-49	50-74	75-99
A00251	Challenger Checkerboard Panels Umbrella (1 Location)	26.71	25.91	25.11	24.57
A00252	Challenger Checkerboard Panels Umbrella (2 Locations)	28.07	27.23	26.39	25.82
A00254	Challenger Checkerboard Panels Umbrella (4 Locations)	30.79	29.87	28.94	28.33

Setup fee: \$20(G)

Stock fabric colors with full-color artwork.  
Minimum order quantity of 12.

Pricing is subject to change.

USD MSRP (C)

Closed Product Size	Arc	Finished Graphic Size	Product Wt.	Media
2"W x 39"H x 2"D	62"	view online template	24 lbs. (qty 12)	rPET polyester (white) / nylon (color)

Production Lead Time: 5 days from final proof approval



Umbrella  
closes down  
to 39".



Anti-slip rubber  
handle with medallion  
features safety glide  
opening mechanism.



Shown in  
white/crimson  
with 2 locations

Wind vent technology allows  
greater airflow; can withstand  
winds up to 75 mph.

#### Stock Challenger Alternating Panels Umbrella Colors

-  Black/White
-  White/Crimson PMS 186
-  White/Azure PMS 286
-  White/Indigo PMS 295

PMS colors are for reference only and may vary slightly  
from actual color.

## CHALLENGER ALTERNATING PANELS UMBRELLA

Engineered for superior durability, performance  
and ultimate rain and wind protection.

- 62" arc with eight-panel construction
- Manual-open golf stick umbrella
- Fiberglass shaft and double-rib frame
- Canopy is constructed of rPET polyester and nylon
- Minimum order quantity of 12
- Custom options available (call for quote; restrictions may apply)
- Hardware has a lifetime warranty

#### Full-Color Imprint

Item #	Description	12-24	25-49	50-74	75-99
A00241	Challenger Alternating Panels Umbrella (1 Location)	26.71	25.91	25.11	24.57
A00242	Challenger Alternating Panels Umbrella (2 Locations)	28.07	27.23	26.39	25.82
A00244	Challenger Alternating Panels Umbrella (4 Locations)	30.79	29.87	28.94	28.33

Setup fee: \$20(G)

Stock fabric colors with full-color artwork.  
Minimum order quantity of 12.

Pricing is subject to change.

USD MSRP (C)

Closed Product Size	Arc	Finished Graphic Size	Product Wt.	Media
2"W x 39"H x 2"D	62"	view online template	24 lbs. (qty 12)	rPET polyester (white) / nylon (color)

Production Lead Time: 5 days from final proof approval



Umbrella  
closes down  
to 39".



Anti-slip rubber  
handle with medallion  
features safety glide  
opening mechanism.

**PRICES ARE SUBJECT TO CHANGE.** No setup fee on orders placed via our website.  
Visit [showdowndisplays.com](http://showdowndisplays.com) for current pricing, graphic templates, product videos and assembly instructions.

[showdowndisplays.com](http://showdowndisplays.com)

## CHALLENGER II UMBRELLA

This must-have umbrella combines strength, reliability and sustainability for ultimate weather protection.

- 62" arc with eight-panel construction
- Manual-open stick umbrella
- Fiberglass shaft and double-rib frame
- Anti-slip rubber handle with medallion
- Closes down to 39"
- Features safety glide opening mechanism
- Solid-color canopy is constructed of rPET polyester; two-color canopy is constructed of rPET polyester and nylon
- Minimum order quantity of 12
- Custom options available (call for quote; restrictions may apply)
- Hardware has a lifetime warranty



Wind vent technology allows greater airflow; can withstand winds up to 75 mph.

Shown in white/crimson with 2 locations

### Full-Color Imprint

Item #	Description	12-24	25-49	50-74	75-99
A00011	Challenger II Umbrella (1 Location)	27.51	26.68	25.86	25.31
A00012	Challenger II Umbrella (2 Locations)	28.91	28.04	27.18	26.60
A00014	Challenger II Umbrella (4 Locations)	31.71	30.76	29.81	29.17

#### Setup fee: \$20(G)

Stock fabric colors with full-color artwork.  
Minimum order quantity of 12.

#### Pricing is subject to change.

USD MSRP (C)

Closed Product Size	Arc	Finished Graphic Size	Product Wt.	Media
2"W x 39"H x 2"D	62"	view online template	19.8 lbs. (qty 12)	solid-color: rPET polyester two-color: rPET polyester (white) / nylon (color)

Production Lead Time: 5 days from final proof approval

#### Stock Challenger II Umbrella Colors

● Crimson PMS 186	● Ruby PMS 201	● Indigo PMS 295
● Cool Gray 11	● Black	● Black/White
● White/Crimson PMS 186	● White/Ruby PMS 201	● White/Azure PMS 286
● White/Indigo PMS 295	● White/Spruce PMS 3435	

PMS colors are for reference only and may vary slightly from actual color.

## AUTO CHALLENGER UMBRELLA

Meet the world's strongest auto-open golf umbrella. Engineered for ultimate durability and performance!

- 62" arc with eight-panel construction
- Auto-open golf stick umbrella
- Fiberglass shaft and double-rib frame
- Anti-slip rubber handle with medallion
- Closes down to 39"
- Features safety glide opening mechanism
- Solid-color canopy is constructed of rPET polyester; two-color canopy is constructed of rPET polyester and nylon
- Minimum order quantity of 12
- Custom options available (call for quote; restrictions may apply)
- Hardware has a lifetime warranty



Wind vent technology allows greater airflow; can withstand winds up to 75 mph.

Shown in white/indigo with 4 locations

### Full-Color Imprint

Item #	Description	12-24	25-49	50-74	75-99
A00231	Auto Challenger Umbrella (1 Location)	33.25	31.97	30.62	29.24
A00232	Auto Challenger Umbrella (2 Locations)	34.61	33.28	31.88	30.44
A00234	Auto Challenger Umbrella (4 Locations)	37.33	36.21	35.09	34.34

#### Setup fee: \$20(G)

Stock fabric colors with full-color artwork.  
Minimum order quantity of 12.

#### Pricing is subject to change.

USD MSRP (C)

Closed Product Size	Arc	Finished Graphic Size	Product Wt.	Media
2"W x 39"H x 2"D	62"	view online template	23 lbs. (qty 12)	solid-color: rPET polyester two-color: rPET polyester (white) / nylon (color)

Production Lead Time: 5 days from final proof approval

#### Stock Auto Challenger Umbrella Colors

● Crimson PMS 186	● Ruby PMS 201
● Indigo PMS 295	● Black
● Black/White	● White/Crimson PMS 186
● White/Azure PMS 286	● White/Indigo PMS 295

PMS colors are for reference only and may vary slightly from actual color.





Shown in black  
with 4 locations

Unique wind vent technology features elastic stretchers and internal cutouts allow greater airflow for tough weather conditions.

#### Stock Folding Challenger III Umbrella Colors

- Indigo PMS 295
- Black

PMS colors are for reference only and may vary slightly from actual color.

## FOLDING CHALLENGER III UMBRELLA

This high-performance, wind-resistant umbrella is built for strength, reliability and sustainability.

- 48" arc with eight-panel construction
- Auto-open folding umbrella
- Steel shaft and fiberglass ribs
- Anti-slip, color-matched rubber handle with wrist strap
- Canopy constructed with rPET polyester
- Minimum order quantity of 12
- Custom options available (call for quote; restrictions may apply)
- Hardware has a lifetime warranty

### Full-Color Imprint

Item #	Description	12-24	25-49	50-74	75-99
A00201	Folding Challenger III Umbrella (1 Location)	31.50	30.29	29.01	27.70
A00202	Folding Challenger III Umbrella (2 Locations)	32.86	31.59	30.26	28.90
A00204	Folding Challenger III Umbrella (4 Locations)	35.59	34.22	32.78	31.30

### Setup fee: \$20(G)

Stock fabric colors with full-color artwork.  
Minimum order quantity of 12.

Pricing is subject to change.

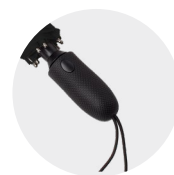
USD MSRP (C)

Closed Product Size	Arc	Finished Graphic Size	Product Wt.	Media
1.5"W x 18"H x 1.5"D	48"	view online template	14.5 lbs. (qty 12)	rPET polyester

Production Lead Time: 5 days from final proof approval



Umbrella folds down to 18" for portability.



Auto-open button is easily accessible on an anti-slip, rubber coated, plastic handle.



Shown with  
2 locations

Wind vent technology allows greater airflow; can withstand winds up to 75 mph.

## SQUARE CHALLENGER UMBRELLA

This high-performance umbrella combines durability, innovation and sustainability for weather protection.

- 68" arc (PGA size) with four-panel construction
- Manual-open golf stick umbrella
- Fiberglass shaft and double-rib frame
- Canopy constructed with rPET polyester
- Minimum order quantity of 12
- Custom options available (call for quote; restrictions may apply)
- Hardware has a lifetime warranty

### Full-Color Imprint

Item #	Description	12-24	25-49	50-74	75-99
A00361	Square Challenger Umbrella (1 Location)	32.16	30.92	29.62	28.28
A00362	Square Challenger Umbrella (2 Locations)	33.52	32.23	30.87	29.48
A00364	Square Challenger Umbrella (4 Locations)	36.24	35.15	34.07	33.34

### Setup fee: \$20(G)

Black with full-color artwork.  
Minimum order quantity of 12.

Pricing is subject to change.

USD MSRP (C)

Closed Product Size	Arc	Finished Graphic Size	Product Wt.	Media
1"W x 39"H x 1"D	68"	view online template	22 lbs. (qty 12)	rPET polyester

Production Lead Time: 5 days from final proof approval



Umbrella closes down to 39".



Unique square shape keeps you protected from the elements.



Anti-slip rubber handle with medallion features safety glide opening mechanism.

**PRICES ARE SUBJECT TO CHANGE.** No setup fee on orders placed via our website.  
Visit [showdowndisplays.com](http://showdowndisplays.com) for current pricing, graphic templates, product videos and assembly instructions.

[showdowndisplays.com](http://showdowndisplays.com)



SPORT CHALLENGER UMBRELLA

This high-performance, virtually indestructible umbrella is designed for strength and reliability.

- 46" arc with eight-panel construction
- Auto-open folding umbrella
- Fiberglass shaft and frame
- Rubber handle with wrist strap
- Solid-color canopy is constructed of rPET polyester;
- two-color canopy is constructed of rPET polyester and nylon
- Minimum order quantity of 12
- Custom options available (call for quote; restrictions may apply)
- Hardware has a lifetime warranty

Full-Color Imprint

Item #	Description	12-24	25-49	50-74	75-99
A00191	Sport Challenger Umbrella (1 Location)	31.61	29.71	28.45	26.55
A00192	Sport Challenger Umbrella (2 Locations)	32.97	30.99	29.67	27.69
A00194	Sport Challenger Umbrella (4 Locations)	35.70	34.33	32.88	31.40

Setup fee: \$20(G)

Stock fabric colors with full-color artwork.  
Minimum order quantity of 12.

Pricing is subject to change.

USD MSRP (C)

Closed Product Size	Arc	Finished Graphic Size	Product Wt.	Media
2"W x 16"H x 2"D	46"	view online template	13.25 lbs. (qty 12)	solid-color: rPET polyester two-color: rPET polyester (white) / nylon (color)

Production Lead Time: 5 days from final proof approval



Umbrella folds down to 16" for portability.



Rubber handle matches the fiberglass shaft and ribs.



Shown in white/azure with 2 locations

Wind vent technology allows greater airflow.

Stock Sport Challenger Umbrella Colors

- Indigo PMS 295
- Black
- Black/White
- White/Crimson PMS 186
- White/Azure PMS 286
- White/Indigo PMS 295

PMS colors are for reference only and may vary slightly from actual color.

GOLF UMBRELLA

Built to handle the elements, this golf umbrella offers wide coverage, durable construction and dependable performance.

- 62" arc with eight-panel construction
- Manual-open stick umbrella
- Black fiberglass shaft and ribs
- Canopy is constructed of rPET polyester
- Minimum order quantity of 25
- Hardware has a lifetime warranty
- Not eligible for Rush Service

Dye Sublimation

Item #	Description	25-49	50-99	100-249	250-499
A00382	Golf Umbrella (Single-Sided)	68.65	66.05	63.25	60.40
A00383	Golf Umbrella (Double-Sided)	74.45	71.60	68.55	65.50

Setup fee: \$20(G)

White fabric fully dye sublimated with full-color artwork.  
Minimum order quantity of 25.

Pricing is subject to change.

USD MSRP (C)

Closed Product Size	Arc	Finished Graphic Size	Product Wt.	Media
1"W x 39"H x 1"D	62"	view online template	31 lbs. (qty 25)	rPET polyester

Production Lead Time: 30 days from final proof approval



Umbrella closes down to 39".



Anti-slip rubber handle matches the black fiberglass shaft and ribs.



Shown with dye sublimation (single-sided)





Shown in white/spruce  
with 4 locations

#### Stock Sport & Street Umbrella Colors

- White
- Azure PMS 286
- Spruce PMS 3435
- Black
- White/Crimson PMS 186
- White/Azure PMS 286
- White/Spruce PMS 3435
- Ruby PMS 201
- Indigo PMS 295
- Cool Gray 11
- Black/White
- White/Ruby PMS 201
- White/Indigo PMS 295

PMS colors are for reference only and may vary slightly from actual color.

## SPORT & STREET UMBRELLA

This versatile and eco-friendly umbrella offers full-size coverage making it perfect for everyday use.

- 48" arc with eight-panel construction
- Auto-open stick umbrella
- Solid-color canopy is constructed of rPET polyester;
- two-color canopy is constructed of rPET polyester and nylon
- Minimum order quantity of 12
- Laser engraved handle and other custom options available (call for quote; restrictions may apply)
- Hardware has a lifetime warranty

### Full-Color Imprint

Item #	Description	12-24	25-49	50-74	75-99
A00161	Sport & Street Umbrella (1 Location)	13.08	12.69	12.30	12.03
A00162	Sport & Street Umbrella (2 Locations)	14.44	14.01	13.57	13.28
A00164	Sport & Street Umbrella (4 Locations)	17.17	16.65	16.14	15.80

Setup fee: \$20(G)

Stock fabric colors with full-color artwork.  
Minimum order quantity of 12.

Pricing is subject to change.

USD MSRP (C)

Closed Product Size	Arc	Finished Graphic Size	Product Wt.	Media
1.5"W x 32"H x 1.5"D	48"	view online template	12.6 lbs. (qty 12)	solid-color: rPET polyester two-color: rPET polyester (white) / nylon (color)

Production Lead Time: 5 days from final proof approval



Umbrella closes down to 32".



Hardwood handle stands out against the black steel shaft and ribs.



Shown in white/crimson  
with 4 locations

Wind vent technology allows greater airflow.

#### Stock Champ II Umbrella Colors

- Indigo PMS 295
- Black
- White/Crimson PMS 186
- White/Indigo PMS 295
- Spruce PMS 3435
- Black/White
- White/Azure PMS 286

PMS colors are for reference only and may vary slightly from actual color.

## CHAMP II UMBRELLA

This high-performance umbrella is designed for superior coverage and durability, making it a must-have for golfers, outdoor enthusiasts and everyday use!

- 58" arc with eight-panel construction
- Auto-open, folding, golf umbrella
- Multi-patented steel shaft and fiberglass ribs
- Anti-slip rubber handle
- Folds down to 22.5"
- Solid-color canopy is constructed of rPET polyester;
- two-color canopy is constructed of rPET polyester and nylon
- Minimum order quantity of 12
- Custom options available (call for quote; restrictions may apply)
- Hardware has a lifetime warranty

### Full-Color Imprint

Item #	Description	12-24	25-49	50-74	75-99
A00051	Champ II Umbrella (1 Location)	31.44	30.50	29.55	28.92
A00052	Champ II Umbrella (2 Locations)	32.84	31.85	30.87	30.21
A00054	Champ II Umbrella (4 Locations)	35.65	34.58	33.51	32.80

Setup fee: \$20(G)

Stock fabric colors with full-color artwork.  
Minimum order quantity of 12.

Pricing is subject to change.

USD MSRP (C)

Closed Product Size	Arc	Finished Graphic Size	Product Wt.	Media
2"W x 22.5"H x 2"D	58"	view online template	20 lbs. (qty 12)	solid-color: rPET polyester two-color: rPET polyester (white) / nylon (color)

Production Lead Time: 5 days from final proof approval

**PRICES ARE SUBJECT TO CHANGE.** No setup fee on orders placed via our website.  
Visit [showdowndisplays.com](http://showdowndisplays.com) for current pricing, graphic templates, product videos and assembly instructions.

[showdowndisplays.com](http://showdowndisplays.com)

CLASSIC FASHION UMBRELLA

This high-quality umbrella combines classic appeal with modern sustainability, making it a reliable choice for any occasion.

- 48" arc with eight-panel construction
- Manual-open stick umbrella
- Steel shaft and fiberglass ribs
- Canopy constructed with rPET polyester
- Minimum order quantity of 12
- Custom options available (call for quote; restrictions may apply)
- Hardware has a lifetime warranty

Full-Color Imprint

Item #	Description	12-24	25-49	50-74	75-99
A00351	Classic Fashion Umbrella (1 Location)	14.72	14.15	13.56	12.95
A00352	Classic Fashion Umbrella (2 Locations)	16.08	15.46	14.81	14.14
A00354	Classic Fashion Umbrella (4 Locations)	18.80	18.24	17.67	17.30

Setup fee: \$20(G)

Stock fabric colors with full-color artwork.  
Minimum order quantity of 12.

Pricing is subject to change.

USD MSRP (C)

Closed Product Size	Arc	Finished Graphic Size	Product Wt.	Media
4"W x 36"H x 2"D	48"	view online template	10.25 lbs. (qty 12)	rPET polyester

Production Lead Time: 5 days from final proof approval

Stock Classic Fashion Umbrella Colors

- Indigo PMS 295
- Black

PMS colors are for reference only and may vary slightly from actual color.



Umbrella closes down to 36".



Features a black hardwood handle.

EURO FASHION UMBRELLA

Experience classic European style with a sleek and eco-friendly design. The umbrella where fashion meets function, rain or shine!

- 48" arc with eight-panel construction
- Auto-open stick umbrella
- Wood shaft and fiberglass ribs
- Canopy constructed with rPET polyester
- Minimum order quantity of 12
- Custom options available (call for quote; restrictions may apply)
- Hardware has a lifetime warranty

Full-Color Imprint

Item #	Description	12-24	25-49	50-74	75-99
A00371	Euro Fashion Umbrella (1 Location)	18.86	17.73	16.97	15.84
A00372	Euro Fashion Umbrella (2 Locations)	20.22	19.01	18.20	16.98
A00374	Euro Fashion Umbrella (4 Locations)	22.94	22.06	21.13	20.18

Setup fee: \$20(G)

Stock fabric colors with full-color artwork.  
Minimum order quantity of 12.

Pricing is subject to change.

USD MSRP (C)

Closed Product Size	Arc	Finished Graphic Size	Product Wt.	Media
4"W x 36"H x 2"D	48"	view online template	12.5 lbs. (qty 12)	rPET polyester

Production Lead Time: 5 days from final proof approval

Stock Euro Fashion Umbrella Colors

- Indigo PMS 295
- Black

PMS colors are for reference only and may vary slightly from actual color.



Shown in black with 1 location



Umbrella closes down to 36".



Wood shaft and curved handle are made from one-piece of wood.





Shown with  
1 location



Umbrella folds down  
to 13.5" for portability.



Auto-open button is  
easily accessible on the  
cherry wood handle.

## PARK AVENUE 1 UMBRELLA

This sophisticated and strong umbrella is designed for those who appreciate quality, style and function.

- 44" arc with eight-panel construction
- Auto-open folding umbrella
- Hexagon steel shaft and fiberglass ribs
- Cherry wood handle with wrist strap
- Features windproof frame
- Heather gray canopy constructed with rPET polyester
- Minimum order quantity of 12
- Laser engraved handle and other custom options available (call for quote; restrictions may apply)
- Hardware has a lifetime warranty

### Full-Color Imprint

Item #	Description	12-24	25-49	50-74	75-99
A00101	Park Avenue 1 Umbrella (1 Location)	17.99	16.91	16.19	15.11
A00102	Park Avenue 1 Umbrella (2 Locations)	19.35	18.19	17.42	16.25
A00104	Park Avenue 1 Umbrella (4 Locations)	22.07	20.75	19.86	18.54

**Setup fee: \$20(G)**

**Pricing is subject to change.**

Heather gray with full-color artwork.  
Minimum order quantity of 12.

USD MSRP (C)

Closed Product Size	Arc	Finished Graphic Size	Product Wt.	Media
1.5"W x 13.5"H x 1.5"D	44"	view online template	11 lbs. (qty 12)	rPET polyester

Production Lead Time: 5 days from final proof approval



Shown with  
4 locations



Wind vent  
technology allows  
greater airflow.



Umbrella folds down  
to 16" for portability.



Auto-open button is  
easily accessible on the  
cherry wood handle.

## PARK AVENUE 2 UMBRELLA

A polished umbrella that combines elegance with functionality.

- 46" arc with eight-panel construction
- Auto-open folding umbrella
- Steel shaft and fiberglass ribs
- Cherry wood handle with wrist strap
- Heather gray canopy constructed with rPET polyester
- Minimum order quantity of 12
- Laser engraved handle and other custom options available (call for quote; restrictions may apply)
- Hardware has a lifetime warranty

### Full-Color Imprint

Item #	Description	12-24	25-49	50-74	75-99
A00111	Park Avenue 2 Umbrella (1 Location)	26.16	24.59	23.54	21.97
A00112	Park Avenue 2 Umbrella (2 Locations)	27.52	25.87	24.77	23.12
A00114	Park Avenue 2 Umbrella (4 Locations)	30.25	28.44	27.23	25.41

**Setup fee: \$20(G)**

**Pricing is subject to change.**

Heather gray with full-color artwork.  
Minimum order quantity of 12.

USD MSRP (C)

Closed Product Size	Arc	Finished Graphic Size	Product Wt.	Media
1.5"W x 16"H x 1.5"D	46"	view online template	16 lbs. (qty 12)	rPET polyester

Production Lead Time: 5 days from final proof approval



## PARK AVENUE 3 UMBRELLA

An upscale and durable umbrella designed with style and innovation in mind.

- 58" arc with eight-panel construction
- Auto-open folding umbrella
- Black steel shaft and fiberglass ribs
- Cherry wood handle with wrist strap
- Heather gray canopy constructed with rPET polyester
- Minimum order quantity of 12
- Laser engraved handle and other custom options available (call for quote; restrictions may apply)
- Hardware has a lifetime warranty

### Full-Color Imprint

Item #	Description	12-24	25-49	50-74	75-99
A00121	Park Avenue 3 Umbrella (1 Location)	31.07	30.14	29.21	28.58
A00122	Park Avenue 3 Umbrella (2 Locations)	32.43	31.46	30.48	29.84
A00124	Park Avenue 3 Umbrella (4 Locations)	35.15	34.10	33.04	32.34

Setup fee: \$20(G)

Heather gray with full-color artwork.  
Minimum order quantity of 12.

Pricing is subject to change.

USD MSRP (C)

Closed Product Size	Arc	Finished Graphic Size	Product Wt.	Media
2"W x 22.5"H x 2"D	58"	view online template	21 lbs. (qty 12)	rPET polyester

Production Lead Time: 5 days from final proof approval



Umbrella folds down to 22.5" for portability.



Auto-open button is easily accessible on the cherry wood handle.

## PARK AVENUE 4 UMBRELLA

This luxurious and reliable umbrella combines quality and innovation with style!

- 46" arc with eight-panel construction
- Auto-open inverted stick umbrella
- Steel with ABS plastic shaft and fiberglass ribs
- Cherry wood handle with wrist strap
- Closes down to 23"
- Heather gray canopy constructed with rPET polyester
- Minimum order quantity of 12
- Laser engraved handle and other custom options available (call for quote; restrictions may apply)
- Hardware has a lifetime warranty

### Full-Color Imprint

Item #	Description	12-24	25-49	50-74	75-99
A00131	Park Avenue 4 Umbrella (1 Location)	25.62	24.85	24.08	23.57
A00132	Park Avenue 4 Umbrella (2 Locations)	26.98	26.17	25.36	24.82
A00134	Park Avenue 4 Umbrella (4 Locations)	29.70	28.81	27.92	27.32

Setup fee: \$20(G)

Heather gray with full-color artwork.  
Minimum order quantity of 12.

Pricing is subject to change.

USD MSRP (C)

Closed Product Size	Arc	Finished Graphic Size	Product Wt.	Media
2.5"W x 23"H x 2.5"D	46"	view online template	18.6 lbs. (qty 12)	rPET polyester

Production Lead Time: 5 days from final proof approval



Features an inverted design that prevents water from dripping when closed.



Auto-open button is easily accessible above the cherry wood handle.



Shown with  
1 location

Features an inverted design that prevents water from dripping when closed.



Auto-open/close button is easily accessible on the cherry wood handle.

## PARK AVENUE 5 UMBRELLA

Designed for effortless use, its auto-open and close function allows for a smooth, one-handed operation.

- 46" arc with eight-panel construction
- Auto-open/close inverted folding umbrella
- Chromed steel shaft and fiberglass ribs
- Cherry wood handle with wrist strap
- Folds down to 12"
- Heather gray canopy constructed with rPET polyester
- Minimum order quantity of 12
- Laser engraved handle and other custom options available (call for quote; restrictions may apply)
- Hardware has a lifetime warranty

### Full-Color Imprint

Item #	Description	12-24	25-49	50-74	75-99
A00141	Park Avenue 5 Umbrella (1 Location)	24.53	23.79	23.06	22.57
A00142	Park Avenue 5 Umbrella (2 Locations)	25.89	25.11	24.34	23.82
A00144	Park Avenue 5 Umbrella (4 Locations)	28.61	27.75	26.89	26.32

**Setup fee: \$20(G)**

Heather gray with full-color artwork.  
Minimum order quantity of 12.

**Pricing is subject to change.**

USD MSRP (C)

Closed Product Size	Arc	Finished Graphic Size	Product Wt.	Media
2.5"W x 12"H x 2.5"D	46"	view online template	13.5 lbs. (qty 12)	rPET polyester

Production Lead Time: 5 days from final proof approval



## LUXE UMBRELLA

This timeless, high-end umbrella seamlessly blends luxury with performance, making it the perfect choice for those who appreciate both style and functionality.

- 48" arc with eight-panel construction
- Auto-open stick umbrella
- Dark mahogany wood shaft and fiberglass ribs
- Canopy is constructed of rPET polyester
- Minimum order quantity of 12
- Laser engraved handle and other custom options available (call for quote; restrictions may apply)
- Hardware has a lifetime warranty

### Full-Color Imprint

Item #	Description	12-24	25-49	50-74	75-99
A00281	Luxe Umbrella (1 Location)	28.89	27.78	26.61	25.41
A00282	Luxe Umbrella (2 Locations)	30.25	29.09	27.86	26.60
A00284	Luxe Umbrella (4 Locations)	32.97	31.70	30.37	29.00

**Setup fee: \$20(G)**

Stock fabric colors with full-color artwork.  
Minimum order quantity of 12.

**Pricing is subject to change.**

USD MSRP (C)

Closed Product Size	Arc	Finished Graphic Size	Product Wt.	Media
4"W x 36"H x 2"D	48"	view online template	18 lbs. (qty 12)	rPET polyester

Production Lead Time: 5 days from final proof approval



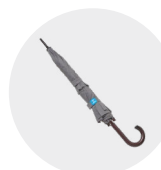
Shown in  
cool gray 11  
with 2 locations

Wind vent technology allows greater airflow.

### Stock Luxe Umbrella Colors

- Cool Gray 11
- Black

PMS colors are for reference only and may vary slightly from actual color.



Umbrella closes down to 36".



Curved wood handle with wood-tone accents.

**PRICES ARE SUBJECT TO CHANGE.** No setup fee on orders placed via our website.  
Visit [showdowndisplays.com](http://showdowndisplays.com) for current pricing, graphic templates, product videos and assembly instructions.

[showdowndisplays.com](http://showdowndisplays.com)

JINGLEBRELLA™

This unique promotional umbrella is designed to leave a lasting impression with its innovative features and premium construction.

- 50" arc with eight-panel construction
- Auto-open stick umbrella
- Black steel shaft and fiberglass ribs
- Features patented technology to play a custom sound bit when opened (MP3 file not included)
- Purchase requires signed Terms of Use & Liability Waiver Agreement
- Requires 2 AAA batteries (included)
- Canopy constructed with rPET polyester
- Minimum order quantity of 12
- Custom options available (call for quote; restrictions may apply)
- Hardware has a lifetime warranty

Full-Color Imprint

Item #	Description	12-24	25-49	50-74	75-99
A00341	JingleBrella™ (1 Location)	69.00	66.95	64.85	63.50
A00342	JingleBrella™ (2 Locations)	70.35	68.25	66.15	64.75
A00344	JingleBrella™ (4 Locations)	73.10	70.90	68.70	67.25

Setup fee: \$20(G)      Pricing is subject to change.  
Black with full-color artwork.      USD MSRP (C)  
Minimum order quantity of 12.

Closed Product Size	Arc	Finished Graphic Size	Product Wt.	Media
1"W x 33"H x 1"D	50"	view online template	16 lbs. (qty 12)	rPET polyester

Production Lead Time: 5 days from final proof approval



Shown with 1 location

Speaker is located at the base of the handle.



Umbrella closes down to 33".



Auto-open button is easily accessible on the matte black rubber handle.

SPOTLIGHT UMBRELLA

This one-of-a-kind umbrella seamlessly blends functionality, durability and high-tech lighting for an exceptional weather protection experience.

- 50" arc with eight-panel construction
- Auto-open stick umbrella
- Black steel shaft and black fiberglass ribs
- Requires 3 AAA batteries (included)
- Canopy constructed with rPET polyester
- Black canopy with light gray interior
- Minimum order quantity of 12
- Custom options available (call for quote; restrictions may apply)
- Hardware has a lifetime warranty

Full-Color Imprint

Item #	Description	12-24	25-49	50-74	75-99
A00001	Spotlight Umbrella (1 Location)	42.51	41.23	39.96	39.11
A00002	Spotlight Umbrella (2 Locations)	43.87	42.55	41.24	40.36
A00004	Spotlight Umbrella (4 Locations)	46.60	45.20	43.80	42.87

Setup fee: \$20(G)      Pricing is subject to change.  
Black with full-color artwork.      USD MSRP (C)  
Minimum order quantity of 12.

Closed Product Size	Arc	Finished Graphic Size	Product Wt.	Media
1"W x 33"H x 1"D	50"	view online template	17.6 lbs. (qty 12)	rPET polyester

Production Lead Time: 5 days from final proof approval



Shown with 1 location

Features built-in high-visibility interior LED.



Umbrella closes down to 33".



Auto-open button is easily accessible on the ABS rubber matte black handle.





## ZION UMBRELLA

This refined and durable umbrella is the perfect blend of style, functionality and sustainability.

- 44" arc with eight-panel construction
- Auto-open folding umbrella
- Black steel shaft and black fiberglass ribs
- Cherry wood handle with wrist strap
- Canopy constructed with rPET polyester
- Minimum order quantity of 12
- Custom options available (call for quote; restrictions may apply)
- Hardware has a lifetime warranty

### Full-Color Imprint

Item #	Description	12-24	25-49	50-74	75-99
A00061	Zion Umbrella (1 Location)	16.35	15.72	15.06	14.38
A00062	Zion Umbrella (2 Locations)	17.71	17.18	16.65	16.29
A00064	Zion Umbrella (4 Locations)	20.44	19.83	19.21	18.80

### Setup fee: \$20(G)

Stock fabric colors with full-color artwork.  
Minimum order quantity of 12.

### Pricing is subject to change.

USD MSRP (C)

Closed Product Size	Arc	Finished Graphic Size	Product Wt.	Media
2.25"W x 14"H x 2.25"D	44"	view online template	11 lbs. (qty 12)	rPET polyester

Production Lead Time: 5 days from final proof approval



Umbrella folds down to 14" for portability.



Auto-open button is easily accessible on the cherry wood handle.

### Stock Zion Umbrella Colors

● Indigo PMS 295

● Black

PMS colors are for reference only and may vary slightly from actual color.



Shown in crimson with 2 locations

Wind vent technology allows greater airflow.

## HURRICANE UMBRELLA

This wind-resistant umbrella offers unbeatable value.

- 60" arc with eight-panel construction
- Auto-open stick umbrella
- Fiberglass shaft and ribs
- Solid-color canopy is constructed of rPET polyester;
- two-color canopy is constructed of rPET polyester and nylon
- Minimum order quantity of 12
- Custom options available (call for quote; restrictions may apply)
- Hardware has a lifetime warranty

### Full-Color Imprint

Item #	Description	12-24	25-49	50-74	75-99
A00091	Hurricane Umbrella (1 Location)	20.71	19.47	18.64	17.40
A00092	Hurricane Umbrella (2 Locations)	22.07	20.75	19.86	18.54
A00094	Hurricane Umbrella (4 Locations)	24.80	23.85	22.84	21.81

### Setup fee: \$20(G)

Stock fabric colors with full-color artwork.  
Minimum order quantity of 12.

### Pricing is subject to change.

USD MSRP (C)

Closed Product Size	Arc	Finished Graphic Size	Product Wt.	Media
2.5"W x 37"H x 2.5"D	60"	view online template	19.2 lbs. (qty 12)	solid-color: rPET polyester two-color: rPET polyester (white) / nylon (color)

Production Lead Time: 5 days from final proof approval



This golf stick umbrella closes down to 37".



Auto-open button is easily accessible above the rubber grip handle.

### Stock Hurricane Umbrella Colors

● Crimson PMS 186

● Azure PMS 286

● Indigo PMS 295

● Black

● Black/White

● White/Crimson PMS 186

● White/Azure PMS 286

● White/Indigo PMS 295

PMS colors are for reference only and may vary slightly from actual color.

**PRICES ARE SUBJECT TO CHANGE.** No setup fee on orders placed via our website.  
Visit [showdowndisplays.com](http://showdowndisplays.com) for current pricing, graphic templates, product videos and assembly instructions.

[showdowndisplays.com](http://showdowndisplays.com)





## REBEL 2 AND REBEL 3 UMBRELLAS

These stylish and eco-conscious umbrellas are designed for ultimate convenience and protection.

- 46" arc with eight-panel construction
- Fiberglass shaft and ribs
- Rubber grip handle with wrist strap
- Features an inverted design that prevents water from dripping when closed
- Canopy constructed with rPET polyester
- Minimum order quantity of 12 for full-color imprint; 25 for dye sublimation
- Custom options available (call for quote; restrictions may apply)
- Hardware has a lifetime warranty
- Dye sublimation is not eligible for Rush Service

### Full-Color Imprint

Item #	Description	12-24	25-49	50-74	75-99
A00171	Rebel 2 Umbrella (1 Location)	22.89	22.20	21.52	21.06
A00172	Rebel 2 Umbrella (2 Locations)	24.25	23.52	22.80	22.31
A00174	Rebel 2 Umbrella (4 Locations)	26.98	26.17	25.36	24.82

### Setup fee: \$20(G)

Stock fabric colors with full-color artwork.  
Minimum order quantity of 12.

### Pricing is subject to change.

USD MSRP (C)

Closed Product Size	Arc	Finished Graphic Size	Product Wt.	Media
2.5"W x 34.5"H x 2.5"D	46"	view online template	18.25 lbs. (qty 12)	rPET polyester

### Dye Sublimation

Item #	Description	25-49	50-99	100-249	250-499
A00384	Rebel 2 Umbrella (Double-Sided)	57.25	55.05	52.70	50.35

### Setup fee: \$20(G)

White fabric fully dye sublimated with full-color artwork.  
Minimum order quantity of 25.

### Pricing is subject to change.

USD MSRP (C)

Closed Product Size	Arc	Finished Graphic Size	Product Wt.	Media
2.5"W x 34.5"H x 2.5"D	46"	view online template	38 lbs. (qty 25)	rPET polyester

Production Lead Time: 5 days for full-color imprint / 30 days for dye sublimation from final proof approval

### Stock Rebel 2 Umbrella Colors

- Black
- Black/Crimson PMS 186
- Black/Azure PMS 286

PMS colors are for reference only and may vary slightly from actual color.



Rebel 3 is an auto-open/close, folding umbrella that folds down to 12" for portability.

### Full-Color Imprint

Item #	Description	12-24	25-49	50-74	75-99
A00181	Rebel 3 Umbrella (1 Location)	22.35	21.68	21.01	20.56
A00182	Rebel 3 Umbrella (2 Locations)	23.71	23.00	22.29	21.81
A00184	Rebel 3 Umbrella (4 Locations)	26.43	25.64	24.84	24.32

### Setup fee: \$20(G)

Stock fabric colors with full-color artwork.  
Minimum order quantity of 12.

### Pricing is subject to change.

USD MSRP (C)

Closed Product Size	Arc	Finished Graphic Size	Product Wt.	Media
2.5"W x 12"H x 2.5"D	46"	view online template	13.25 lbs. (qty 12)	rPET polyester

Production Lead Time: 5 days from final proof approval

### Stock Rebel 3 Umbrella Colors

- Black
- Black/Crimson PMS 186
- Black/Azure PMS 286
- Black/Lime Green PMS 375
- Black/Cool Gray 11

PMS colors are for reference only and may vary slightly from actual color.

**PRICES ARE SUBJECT TO CHANGE.** No setup fee on orders placed via our website.  
Visit [showdowndisplays.com](http://showdowndisplays.com) for current pricing, graphic templates, product videos and assembly instructions.

[showdowndisplays.com](http://showdowndisplays.com)



Shown in cool gray 11  
with 4 locations

#### Stock CEO Umbrella Colors

- Cool Gray 11
- Black

PMS colors are for reference only and may vary slightly from actual color.

## CEO UMBRELLA

Sleek, smart and eco-friendly, this 46" arc umbrella offers ample coverage while boasting lightweight durability.

- 46" arc with eight-panel construction
- Auto-open/close folding umbrella
- Aluminum shaft and fiberglass ribs
- Canopy is constructed with rPET polyester
- Minimum order quantity of 12
- Custom options available (call for quote; restrictions may apply)
- Hardware has a lifetime warranty

### Full-Color Imprint

Item #	Description	12-24	25-49	50-74	75-99
A00211	CEO Umbrella (1 Location)	23.44	22.54	21.59	20.62
A00212	CEO Umbrella (2 Locations)	24.80	23.85	22.84	21.81
A00214	CEO Umbrella (4 Locations)	27.52	26.46	25.35	24.20

**Setup fee: \$20(G)**

**Pricing is subject to change.**

Stock fabric colors with full-color artwork.  
Minimum order quantity of 12.

USD MSRP (C)

Closed Product Size	Arc	Finished Graphic Size	Product Wt.	Media
4"W x 13"H x 2"D	46"	view online template	13.25 lbs. (qty 12)	rPET polyester

Production Lead Time: 5 days from final proof approval



Umbrella folds down to 13" for portability.



Auto-open/close button is easily accessible on the curved, faux wood handle.



Shown with  
2 locations

Wind vent technology allows greater airflow.

## JUDGE UMBRELLA

This expertly designed umbrella offers a perfect blend of durability and convenience, making it a must-have for any weather condition.

- 54" arc with eight-panel construction
- Auto-open/close folding umbrella
- Nickel-plated steel shaft and fiberglass ribs
- Hard plastic and faux wood grain handle with wrist strap
- Features patented safety shaft that locks in any position preventing accidental collapse, reducing strain and enhancing safety
- Canopy is constructed of rPET polyester
- Minimum order quantity of 12
- Custom options available (call for quote; restrictions may apply)
- Hardware has a lifetime warranty

### Full-Color Imprint

Item #	Description	12-24	25-49	50-74	75-99
A00311	Judge Umbrella (1 Location)	28.67	27.57	26.41	25.22
A00312	Judge Umbrella (2 Locations)	30.03	28.87	27.66	26.41
A00314	Judge Umbrella (4 Locations)	32.75	31.49	30.16	28.80

**Setup fee: \$20(G)**

**Pricing is subject to change.**

Black with full-color artwork.  
Minimum order quantity of 12.

USD MSRP (C)

Closed Product Size	Arc	Finished Graphic Size	Product Wt.	Media
2.5"W x 15"H x 2.5"D	54"	view online template	15 lbs. (qty 12)	rPET polyester

Production Lead Time: 5 days from final proof approval



Umbrella folds down to 15" for portability.



Auto-open/close button is easily accessible on the hard plastic and faux wood grain handle.

**PRICES ARE SUBJECT TO CHANGE.** No setup fee on orders placed via our website.  
Visit [showdowndisplays.com](http://showdowndisplays.com) for current pricing, graphic templates, product videos and assembly instructions.

[showdowndisplays.com](http://showdowndisplays.com)

## MADISON UMBRELLA

This sleek and reliable umbrella seamlessly combines functionality, portability and sustainability, making it a perfect everyday essential.

- 46" arc with eight-panel construction
- Auto-open/close folding umbrella
- Aluminum shaft and fiberglass ribs
- Rubber handle with wrist strap
- Canopy is constructed of rPET polyester
- Minimum order quantity of 12
- Custom options available (call for quote; restrictions may apply)
- Hardware has a lifetime warranty

### Full-Color Imprint

Item #	Description	12-24	25-49	50-74	75-99
A00221	Madison Umbrella (1 Location)	17.99	17.45	16.91	16.55
A00222	Madison Umbrella (2 Locations)	19.35	18.77	18.19	17.80
A00224	Madison Umbrella (4 Locations)	22.07	21.41	20.75	20.30

### Setup fee: \$20(G)

Stock fabric colors with full-color artwork.  
Minimum order quantity of 12.

### Pricing is subject to change.

USD MSRP (C)

Closed Product Size	Arc	Finished Graphic Size	Product Wt.	Media
2"W x 12"H x 2"D	46"	view online template	11 lbs. (qty 12)	rPET polyester

Production Lead Time: 5 days from final proof approval

### Stock Madison Umbrella Colors

- Indigo PMS 295
- Cool Gray 11
- Black

PMS colors are for reference only and may vary slightly from actual color.



Umbrella folds down to 12" for portability.



Auto-open/close button is easily accessible on the rubber handle.

## DUKE UMBRELLA

This sleek and travel-friendly umbrella is designed for reliability, convenience and sustainability.

- 44" arc with eight-panel construction
- Auto-open/close folding umbrella
- Steel shaft and fiberglass ribs
- Black and gun-metal rubber handle with wrist strap
- Canopy is constructed with rPET polyester
- Minimum order quantity of 12
- Custom options available (call for quote; restrictions may apply)
- Hardware has a lifetime warranty

### Full-Color Imprint

Item #	Description	12-24	25-49	50-74	75-99
A00031	Duke Umbrella (1 Location)	17.17	16.51	15.81	15.10
A00032	Duke Umbrella (2 Locations)	18.53	17.97	17.42	17.05
A00034	Duke Umbrella (4 Locations)	21.26	20.62	19.98	19.56

### Setup fee: \$20(G)

Stock fabric colors with full-color artwork.  
Minimum order quantity of 12.

### Pricing is subject to change.

USD MSRP (C)

Closed Product Size	Arc	Finished Graphic Size	Product Wt.	Media
1.5"W x 11"H x 1.5"D	44"	view online template	9.6 lbs. (qty 12)	rPET polyester

Production Lead Time: 5 days from final proof approval

### Stock Duke Umbrella Colors

- Indigo PMS 295
- Gray PMS 423
- Black

PMS colors are for reference only and may vary slightly from actual color.



Shown in indigo with 4 locations

Features ultralight windproof reflex frame.



Umbrella folds down to 11" for portability.



Auto-open/close button is easily accessible on the black and gun-metal rubber handle.





Shown in cool gray 11 with 1 location



Patented safety shaft that locks in any position preventing accidental collapse.



Umbrella folds down to 12" for portability.



Auto-open/close button is easily accessible on the rubber coated plastic handle.

## FREEDOM UMBRELLA

This lightweight umbrella offers protection without the bulk.

- 46" arc with eight-panel construction
- Auto-open/close folding umbrella
- Steel shaft and ribs
- Rubber coated plastic handle with wrist strap
- Wind vent technology allows greater airflow
- Canopy is constructed of rPET polyester
- Minimum order quantity of 12
- Custom options available (call for quote; restrictions may apply)
- Hardware has a lifetime warranty

### Full-Color Imprint

Item #	Description	12-24	25-49	50-74	75-99
A00021	Freedom Umbrella (1 Location)	26.71	25.68	24.60	23.49
A00022	Freedom Umbrella (2 Locations)	28.07	26.99	25.85	24.69
A00024	Freedom Umbrella (4 Locations)	30.79	29.60	28.36	27.08

Setup fee: \$20(G)

Stock fabric colors with full-color artwork.  
Minimum order quantity of 12.

Pricing is subject to change.

USD MSRP (C)

Closed Product Size	Arc	Finished Graphic Size	Product Wt.	Media
2.5"W x 12"H x 2.5"D	46"	view online template	12 lbs. (qty 12)	rPET polyester

Production Lead Time: 5 days from final proof approval

### Stock Freedom Umbrella Colors

- Indigo PMS 295
- Cool Gray 11
- Black

PMS colors are for reference only and may vary slightly from actual color.



Shown in black 4 locations

## REDWOOD UMBRELLA

This refined and durable umbrella is designed for both everyday use and corporate branding.

- 46" arc with eight-panel construction
- Auto-open stick umbrella
- Steel shaft and fiberglass ribs
- Canopy constructed with rPET polyester
- Minimum order quantity of 12
- Laser engraved handle and other custom options available (call for quote; restrictions may apply)
- Hardware has a lifetime warranty

### Full-Color Imprint

Item #	Description	12-24	25-49	50-74	75-99
A00071	Redwood Umbrella (1 Location)	17.44	16.92	16.39	16.04
A00072	Redwood Umbrella (2 Locations)	18.80	18.24	17.67	17.30
A00074	Redwood Umbrella (4 Locations)	21.53	20.88	20.24	19.81

Setup fee: \$20(G)

Stock fabric colors with full-color artwork.  
Minimum order quantity of 12.

Pricing is subject to change.

USD MSRP (C)

Closed Product Size	Arc	Finished Graphic Size	Product Wt.	Media
1.75"W x 33"H x 1.75"D	46"	view online template	10.5 lbs. (qty 12)	rPET polyester

Production Lead Time: 5 days from final proof approval



Umbrella closes down to 33".



Auto-open button is easily accessible above the wood handle.

### Stock Redwood Umbrella Colors

- Indigo PMS 295
- Black

PMS colors are for reference only and may vary slightly from actual color.

**PRICES ARE SUBJECT TO CHANGE.** No setup fee on orders placed via our website.  
Visit [showdowndisplays.com](http://showdowndisplays.com) for current pricing, graphic templates, product videos and assembly instructions.

[showdowndisplays.com](http://showdowndisplays.com)



## GALE FORCE GOLF UMBRELLA

Designed for maximum protection, this umbrella provides the ultimate coverage against the elements.

- 64" arc with eight-panel construction
- Manual-open golf stick umbrella
- Fiberglass shaft and double-rib frame
- Wind vent technology allows greater airflow; can withstand winds up to 75 mph
- Solid-color canopy is constructed of rPET polyester; two-color canopy is constructed of rPET polyester and nylon
- Minimum order quantity of 12
- Custom options available (call for quote; restrictions may apply)
- Hardware has a lifetime warranty

### Full-Color Imprint

Item #	Description	12-24	25-49	50-74	75-99
A00291	Gale Force Golf Umbrella (1 Location)	33.25	31.97	30.62	29.24
A00292	Gale Force Golf Umbrella (2 Locations)	34.61	33.28	31.88	30.44
A00294	Gale Force Golf Umbrella (4 Locations)	37.33	36.21	35.09	34.34

**Setup fee: \$20(G)** **Pricing is subject to change.**  
USD MSRP (C)

Stock fabric colors with full-color artwork.  
Minimum order quantity of 12.

Closed Product Size	Arc	Finished Graphic Size	Product Wt.	Media
2"W x 40"H x 2"D	64"	view online template	21.75 lbs. (qty 12)	solid-color: rPET polyester two-color: rPET polyester (white) / nylon (color)

Production Lead Time: 5 days from final proof approval

### Stock Gale Force Golf Umbrella Colors

- Indigo PMS 295
  - Black
  - White/Crimson PMS 186
  - White/Azure PMS 286
- PMS colors are for reference only and may vary slightly from actual color.



Unique elastic stretcher with internal cutouts for added wind resistance.

Shown in white/azure with 2 locations



Umbrella closes down to 40".



Anti-slip, color-matched, rubber handle features safety glide opening mechanism.

## SUPER WINDY UMBRELLA

Elegant, durable and built to weather any storm.

- 46" arc with eight-panel construction
- Auto-open folding umbrella
- Hexagon steel shaft and fiberglass ribs
- Wood handle with dark nickel accents and wrist strap
- Wind vent technology allows greater airflow
- Solid-color canopy is constructed of rPET polyester; two-color canopy is constructed of rPET polyester and nylon
- Minimum order quantity of 12
- Laser engraved handle and other custom options available (call for quote; restrictions may apply)
- Hardware has a lifetime warranty

### Full-Color Imprint

Item #	Description	12-24	25-49	50-74	75-99
A00151	Super Windy Umbrella (1 Location)	17.44	16.92	16.39	16.04
A00152	Super Windy Umbrella (2 Locations)	18.80	18.24	17.67	17.30
A00154	Super Windy Umbrella (4 Locations)	21.53	20.88	20.24	19.81

**Setup fee: \$20(G)** **Pricing is subject to change.**  
USD MSRP (C)

Stock fabric colors with full-color artwork.  
Minimum order quantity of 12.

Closed Product Size	Arc	Finished Graphic Size	Product Wt.	Media
1.5"W x 18"H x 1.5"D	46"	view online template	10.75 lbs. (qty 12)	solid-color: rPET polyester two-color: rPET polyester (white) / nylon (color)

Production Lead Time: 5 days from final proof approval



Umbrella folds down to 18" for portability.



Shown in white/crimson with 4 locations

### Stock Super Windy Umbrella Colors

- Indigo PMS 295
  - Black
  - White/Crimson PMS 186
  - White/Azure PMS 286
- PMS colors are for reference only and may vary slightly from actual color.



Shown in white/pumpkin with 1 location



Umbrella closes down to 39".



Blonde hardwood handle features safety glide opening mechanism.

## STORM 2 UMBRELLA

This 60" arc umbrella is designed for superior coverage.

- 60" arc with eight-panel construction
- Manual-open golf stick umbrella
- Fiberglass shaft and ribs
- Solid-color canopy is constructed of rPET polyester;
- two-color canopy is constructed of rPET polyester and nylon
- Minimum order quantity of 12
- Custom options available (call for quote; restrictions may apply)
- Hardware has a lifetime warranty

### Full-Color Imprint

Item #	Description	12-24	25-49	50-74	75-99
A00301	Storm 2 Umbrella (1 Location)	16.90	15.89	15.21	14.20
A00302	Storm 2 Umbrella (2 Locations)	18.26	17.16	16.43	15.34
A00304	Storm 2 Umbrella (4 Locations)	20.98	19.72	18.88	17.62

**Setup fee: \$20(G)**

Stock fabric colors with full-color artwork.  
Minimum order quantity of 12.

**Pricing is subject to change.**

USD MSRP (C)

Closed Product Size	Arc	Finished Graphic Size	Product Wt.	Media
2"W x 39"H x 2"D	60"	view online template	15.5 lbs. (qty 12)	solid-color: rPET polyester two-color: rPET polyester (white) / nylon (color)

Production Lead Time: 5 days from final proof approval

### Stock Storm 2 Umbrella Colors

○ White	● Crimson PMS 186	● Ruby PMS 201
● Azure PMS 286	● Indigo PMS 295	● Spruce PMS 3435
● Gray PMS 423	● Black	● Black/White
● White/Pumpkin PMS 165	● White/Crimson PMS 186	● White/Ruby PMS 201
● White/Azure PMS 286	● White/Indigo PMS 295	● White/Spruce PMS 3435

PMS colors are for reference only and may vary slightly from actual color.



Shown in indigo with 2 locations

### Super Flat Mini

- 43" arc with six-panel construction
- Auto-open/close folding umbrella
- Aluminum shaft and fiberglass ribs
- Rubber handle with wrist strap
- Folds down to 10.5"
- Wind vent technology allows greater airflow

### Super Flat Mini Umbrella Stock Colors

- Indigo PMS 295
- Black



Shown in crimson with 1 location

### Super Pocket Mini

- 43" arc with six-panel construction
- Auto-open/close folding umbrella
- Aluminum shaft and ribs
- Rubber handle with wrist strap
- Folds down to 11"

### Super Pocket Mini Umbrella Stock Colors

- Crimson PMS 186
- Black
- Indigo PMS 295
- Cool Gray 11

## MINI UMBRELLAS

These compact yet durable umbrellas are designed for ultimate convenience and reliability.

- Canopy is constructed with rPET polyester
- Minimum order quantity of 12
- Custom options available (call for quote; restrictions may apply)
- Hardware has a lifetime warranty

### Full-Color Imprint

Item #	Description	12-24	25-49	50-74	75-99
A00271	Super Flat Mini Umbrella (1 Location)	17.99	17.45	16.91	16.55
A00272	Super Flat Mini Umbrella (2 Locations)	19.35	18.77	18.19	17.80
A00273	Super Flat Mini Umbrella (3 Locations)	20.71	20.09	19.47	19.05

**Setup fee: \$20(G)**

Stock fabric colors with full-color artwork.  
Minimum order quantity of 12.

**Pricing is subject to change.**

USD MSRP (C)

Closed Product Size	Arc	Finished Graphic Size	Product Wt.	Media
1.5"W x 10.5"H x 1.5"D	43"	view online template	9 lbs. (qty 12)	rPET polyester

### Full-Color Imprint

Item #	Description	12-24	25-49	50-74	75-99
A00261	Super Pocket Mini Umbrella (1 Location)	17.99	16.91	16.19	15.11
A00262	Super Pocket Mini Umbrella (2 Locations)	19.35	18.19	17.42	16.25
A00263	Super Pocket Mini Umbrella (3 Locations)	20.71	19.47	18.64	17.40

**Setup fee: \$20(G)**

Stock fabric colors with full-color artwork.  
Minimum order quantity of 12.

**Pricing is subject to change.**

USD MSRP (C)

Closed Product Size	Arc	Finished Graphic Size	Product Wt.	Media
1.5"W x 11"H x 1.5"D	43"	view online template	9.75 lbs. (qty 12)	rPET polyester

Production Lead Time: 5 days from final proof approval

**PRICES ARE SUBJECT TO CHANGE.** No setup fee on orders placed via our website.  
Visit [showdowndisplays.com](http://showdowndisplays.com) for current pricing, graphic templates, product videos and assembly instructions.

[showdowndisplays.com](http://showdowndisplays.com)

# did you know WE SELL THESE PRODUCTS TOO?



Wayfinding Sign



Hampton Tote



Vintage Cooler



Smash Paddle Set



Jumbo Wide Retractor



Fabric Flags



Deluxe Wood A-frame



UltraFit Crossover  
Table Throw



Flat Base Sign Display



Tapestries



Astra Counter



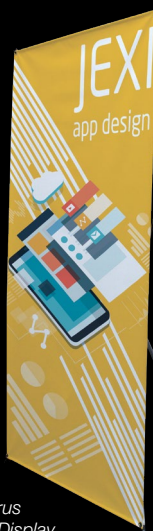
Astra Wall



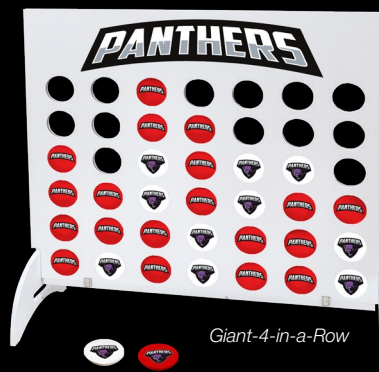
Value  
Wall-Mount SEG



FrameWorx Flex



Taurus  
Banner Display



Giant-4-in-a-Row